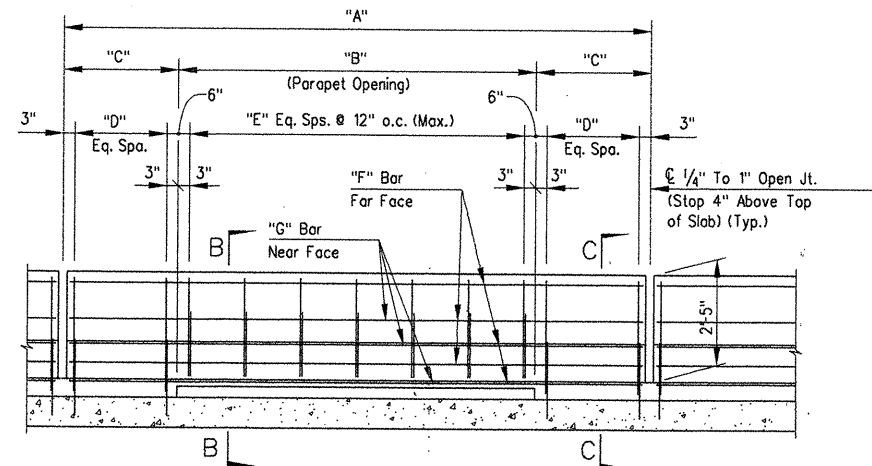
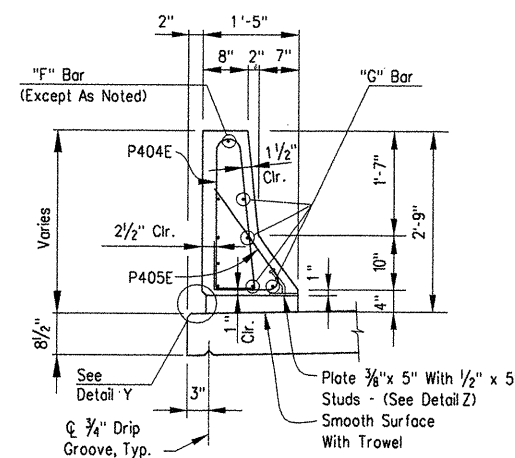


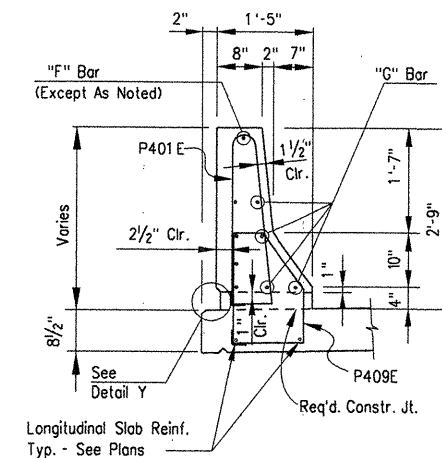
DATE REVISED	DATE FILMED	DATE REVISED	DATE FILMED	FED. ROAD DIST. NO.	STATE	FED. AID PROJ. NO.	SHEET NO.	TOTAL SHEETS
8-3-2010				6	ARK.			
				JOB NO.		1 10394	80	196
				06830 - 1050' PARAPET - 41992				



SECTION A-A (FOR OPEN PARAPET RAIL)
N.T.S.

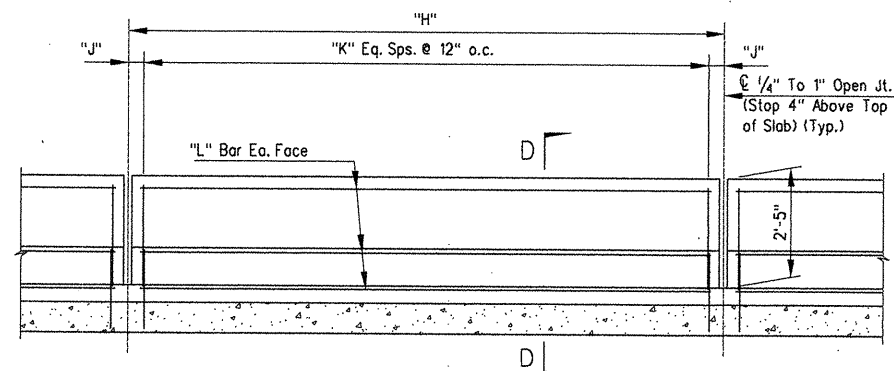


SECTION B-B
Scale: 3/4" = 1'-0"

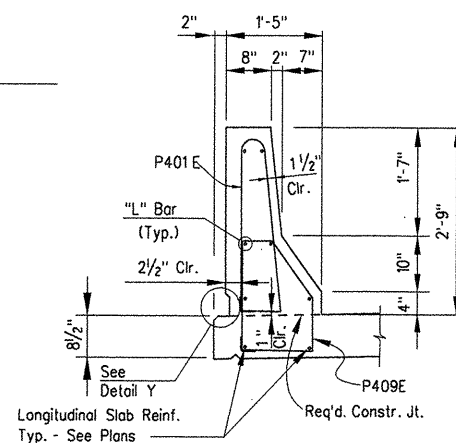


SECTION C-C
Scale: 3/4" = 1'-0"

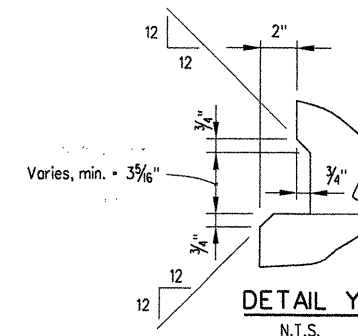
VARIABLES FOR OPEN PARAPET RAIL						
A	B	C	D	E	F	G
9'-6 1/16"	4'-0 1/16"	2'-9 1/4"	5 Eq. Sps.			
10'-5 1/16"	5'-0 1/16"	2'-8 1/16"	5 Eq. Sps.			
11'-6 1/16"	6'-6 1/16"	2'-6 1/4"	6 Eq. Sps.	6 Eq. Sps.	P604E	P413E
12'-0"	6'-6"	2'-9"	6 Eq. Sps.	6 Eq. Sps.	P601E	P403E
12'-5 1/16"	6'-6 1/16"	2'-11 1/16"	6 Eq. Sps.	6 Eq. Sps.	P605E	P414E



SECTION A-A (FOR CLOSED PARAPET RAIL)
N.T.S.



SECTION D-D
Scale: 3/4" = 1'-0"

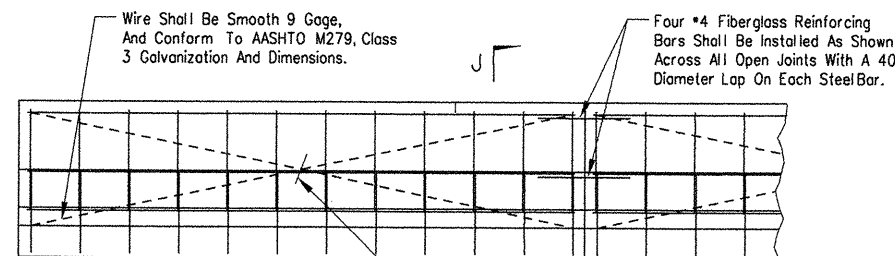


DETAIL Y
N.T.S.

VARIABLES FOR CLOSED PARAPET RAIL			
H	J	K	L
10'-0"	6"	9 Eq. Sps.	P406E
12'-0"	6"	11 Eq. Sps.	P403E
14'-0"	6"	13 Eq. Sps.	P410E

Notes:
Parapet Studs Shall Be 5" Long, Granular Flux Filled, Solid Fluxed, Or Equal And Automatically End Welded To The Plate. Studs And Plate Shall Meet The Requirements Of Section 807. Studs And Plates Shall Be Measured And Paid For As "Structural Steel In Plate Girder Spans (M270, GR.50W)."

The Surfaces Of The 3/8" Plates Which Will Not be in Contact With Concrete Shall Be Painted With Aluminum Epoxy Paint In Accordance With Section 636, Or As Approved By The Engineer. Only One Coat Is Required and Shall Be Applied In The Fabricator's Shop. Painting Will Not Be Paid For Directly, But Will Be Considered Subsidiary To "Structural Steel In Plate Girder Spans (M270, GR.50W)."



Bar To Tighten Smooth Wire Shall Be Epoxy Coated Or Fiberglass

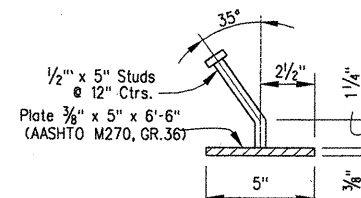
All Panels Shall Be Braced As Shown To Prevent Racking. All Open Joints Shall Be Sawed As Soon As Practical To A Minimum Width Of 1/4". To Control Cracking Before Sawing, All Joints Must Be Grooved Before The Concrete Is Set. Sawing Of The Joints Must Be Controlled So It Will Follow The Grooved Joint.

The Extruded Parapet Shall Conform To The Horizontal And Vertical Lines Shown On The Plans Or As Directed By The Engineer And Shall Present A Smooth, Uniform Appearance And Texture.

Vertical Reinforcing Shall Be Closed Loop On Top

All Smooth Wire Bracing Shall Be Placed On The Inside Faces Of The Reinforcing

Longitudinal Slab Reinf. Typ. - See Plans



DETAIL Z
N.T.S.

DETAILS OF OPTIONAL SLIPFORMING OF CONCRETE PARAPET RAIL (OPEN OR CLOSED)

N.T.S.

SECTION J-J
Scale: 3/4" = 1'-0"

Revised 'Variables For Open Parapet Rail' By AHTD
KDH - 6-3-10 Checked By: HJE/MM



ALTERNATES NO. 1 & NO. 2
BRIDGE OVER WHITE RIVER
(SHEET 14 OF 15)
DETAILS OF 1050'-0" CONT. COMP.
PLATE GIRDER UNIT
WHITE RIVER STR. & APPRS.
(CLARENDON) (PH. 11) (F)
MONROE COUNTY

ROUTE 79 SEC. 13
ARKANSAS STATE HIGHWAY COMMISSION
LITTLE ROCK, ARK.
Engstrom/Modjeski and Masters

DRAWN BY: DLG DATE: NOV. 07 FILENAME: b110394_s14rev1.dgn
CHECKED BY: HJE DATE: NOV. 01 SCALE: 3/4" = 1'-0"
DESIGNED BY: HJE DATE: NOV. 01
BRIDGE NO. 06830 DRAWING NO. 41992

BRIDGE ENGINEER

ACAD SCALE: 3/4" = 1'-0"

COMPANY\1999 JOBS\99-044\AHTD\WHITERIVER\JOB 110394\1050parapetalt1&2